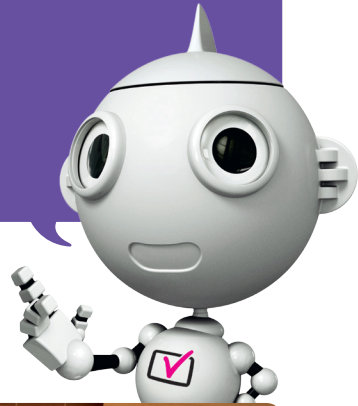


Are you a young carer?

If TV is important to someone you care for, make sure they aren't left without it at switchover.



The Switchover Help Scheme is here to help those who may find the switch to digital TV more difficult. With our help, it's one less thing for you and them to worry about.

BBC The Help Scheme
is run by the BBC

 **switchover**
help scheme

If you're taking care of a parent or relative, and find there's never enough time to fit in all the things you have to do, the Help Scheme can help with one thing.

We can provide everything your parent or relative needs to switch one TV to digital. If they are 75 or over or receive certain disability allowances, they are entitled to:

- Easy-to-use equipment.
- An approved installer to supply and install the equipment for them. The installer will always show an ID badge and call at a time to suit you both.
- A 12-month aftercare service with a free helpline to call while they are getting used to things.

Follow these 3 simple steps:

Check if there is a TV in their home that isn't ready for digital, for example it has 5 channels or fewer.

Is the person you care for aged 75 or over, or eligible for disability allowances?

Tell them about the Help Scheme and they can call us free on **0800 40 85 900**, or you can call on their behalf. Our call centre staff will explain things clearly and simply and will be happy to help.

We are here to help. Make sure those you care for don't lose their TV channels.