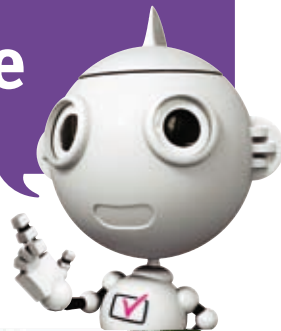


You are a trusted voice

Together we can make sure nobody is left behind.



The switch to digital TV can be daunting for some. The Switchover Help Scheme is here to make sure nobody is left with a blank screen.

helpscheme.co.uk

BBC

The Help Scheme is run by the BBC



The Help Scheme is run by the BBC, under an agreement with the Government. We are here to give practical help to older and disabled people who may find it more difficult to switch to digital TV. We will install easy-to-use equipment and provide a simple demonstration of how it all works.

We are doing all we can but we need help from trusted voices like yours. Do you know of anyone who could use a hand with switching? You may be the only one they listen to.

We can help people who:

- Are 75 or over, **or**
- Have lived in a care home for six months or more, **or**
- Get or could get certain disability allowances, **or**
- Are registered blind or partially sighted



Tell someone about the Help Scheme and help make sure nobody is forgotten. All they need to do is to call us free on 0800 40 85 900 and we'll explain everything. Thank you.